

Colour collection

Fabrics



OVERVIEW Colour collection Fabrics

	Price category	Waterproof	Urine resistance	Anti-bacterial	Fire resistance	Martindale	Reach/ Oeko-tex 100	Usage*	COMPOSITION
FABRICS B2B									
Agua Linetta	C	■	■	■	Crib 5	> 100.000	■	☹☹ ☹☹ ☹☹	100% Treated PES
Highland	B	■	■	■	Crib 5	70.000	■	☹☹ ☹☹	100% PES with Micoporous film + FR Backcoating
Luxe Performance Velvet	C	■	■	■	Crib 5	70.000	■	☹☹ ☹☹	100% PES with Micoporous film + FR Laminate
Riva	B	■	■	■	Crib 5	60.000	■	☹☹ ☹☹	100% PES with Micoporous film + FR Laminate
FABRICS B2C									
Modena	B				EN 1021 1	100.000	■	☹☹	97% PES -3% LI
Rhine	B				EN 1021 1	100.000	■	☹☹	100% PES
Rho	B				EN 1021 1	100.000	■	☹☹	97% PES -2% AC -2% WO
Tana	B				EN 1021 1	100.000	■	☹☹	100% PES

*☹☹ = domestic use / ☹☹☹☹ = project-based use / ☹☹☹☹☹☹ = intensive project-based use

The colours of all pictures are only an indication and may therefore differ from reality. Consequently, no rights may be derived from the colours displayed.



Fabrics B2B

The colours of all pictures are only an indication and may therefore differ from reality. Consequently, no rights may be derived from the colours displayed.

AGUA

PERFORMANCE UPHOLSTERY FABRICS

Linetta Collection

Linen style fabric for indoor upholstery



Linetta Collection | v.15.5



Anti-Microbial



Bleach Cleanable



Fire Retardant
Crib 5/IMO



Stain Resistant



Waterproof



Martindale Abrasion
Severe Contract



Phthalate Free



REACH Compliant

The colours of all pictures are only an indication and may therefore differ from reality. Consequently, no rights may be derived from the colours displayed.

AGUA

Linetta



Linetta Silver



Linetta Light Grey



Linetta Slate



Linetta Mint



Linetta Light Blue



Linetta Steel



Linetta Nutmeg



Linetta Duck Egg



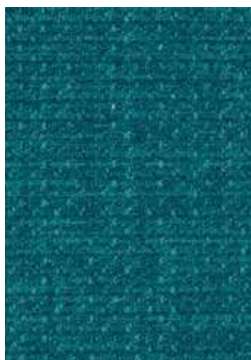
Linetta Denim



Linetta Charcoal



Linetta Truffle



Linetta Teal



Linetta Midnight



Linetta Black



Linetta Chocolate

The colours of all pictures are only an indication and may therefore differ from reality. Consequently, no rights may be derived from the colours displayed.

AGUA

Linetta



Linetta Cream



Linetta Salmon



Linetta Olive



Linetta Grape



Linetta Sand



Linetta Burnt Orange



Linetta Lime



Linetta Purple



Linetta Gold



Linetta Red



Linetta Orchid



Linetta Damson



Linetta Mustard



Linetta Plum



Linetta Violet

The colours of all pictures are only an indication and may therefore differ from reality. Consequently, no rights may be derived from the colours displayed.

Linetta

Sophisticated linen-style fabric for indoor upholstery

Perfect for:

Commercial, cruise, hospitality, leisure and senior living

Fabric Specifications

Flame retardant	BS7176 Crib 5, BS EN 1021-1:2006 1&2, BS5852 Crib 5, IMO Annex 1 Part 8.
Anti-bacterial/Anti-fungal	Resistant to microbial or fungal growth including Salmonella, E Coli and MRSA.
Waterproof	Hydrostatic Head BS3424 > 1 metre.
Martindale	Severe Contract > 100,000.
Stain resistant	Excellent stain removal has been observed for grease, ink, blood, urine, coffee, iodine, betadine, ketchup, chewing gum, chocolate, grape juice.
Composition	100% Treated polyester.
Breathable	Moisture vapour permeable.
Width	140cm (55") wide.

Technical Information

- We recommend a minimum of 32 stitches per 10 cm (8 stitches per inch) and seams must have a minimum 12mm (0.5") bite on the fabric.
- Not suitable for use as removable loose covers.
- Please note that all fabric offered is subject to minor tolerance in respect of shade and other slight variations.
- Technical specifications may be amended, please check for the latest information.
- Please ask if you require a sample of the current batch available but be aware that stock can move quickly.
- Linetta can be colour co-ordinated with Agua faux leather collections to produce stunning furniture with dual textured finishes.
- Bespoke colours can be produced subject to minimum quantity orders.

Fabric Care

- Use a vacuum cleaner or soft brush to remove dust and solid particles.
- Always try cleaning products on a hidden piece of fabric to test suitability.
- Wipe frequently with a damp cloth to maintain the appearance of the fabric.
- All spillages should be removed immediately with a clean absorbent cloth.
- Poorly fixed clothing dyes, e.g. Denim, will cause permanent staining. Most stains can be removed using cold/warm water and a clean microfibre cloth.
- Stains from products containing oil and grease should be treated with a spirit based solution.
- Can be steam cleaned in situ.
- Can be cleaned with mild Hypochlorite solutions (up to 10,000 ppm of available chlorine - including Haz Tabs and Chlor-Clean) or Mineral Spirit for infection control purposes.
- If soap based cleaners are used, all soap residues must be rinsed from the fabric.
- Do not machine wash or dry clean.
- Remove all stains immediately before they set.
- Please refer to the Linetta Fabric Technical Specifications PDF download on the Agua website for further details.
- Do not use solvents, chemical agents, waxes or polishes as this will damage the surface of the fabric.

Our Environmental Policy

Our products have always been phthalate free and Reach* compliant. Our processes are non-toxic and the methods used during manufacture and finishing ensure that potentially hazardous accidental cross contamination is minimised to the greatest degree possible. All our fabrics meet the stringent Oeko-Tex**

standards, regardless of origin, so are free from harmful chemicals and safe for human use.

* Registration, Evaluation, Authorisation and Restriction of Chemicals (EU regulation: 18th December 2006)

** See more: www.oeko-tex.com

Samples and Enquires

You can contact us for samples, order enquiries or information about any of our fabric ranges here:

Vyva Fabrics
 TT. Vasumweg 140
 1033 SH Amsterdam, The Netherlands
 Tel +31(0)20-6599523 info@vyvafabrics.nl
 samples@vyvafabrics.nl www.vyvafabrics.nl



Certificate No. FS 531220

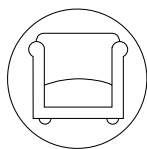


Pamaz®

Highland

A high performance upholstery with a subtle linen effect

Upholstery
FR Contract Fabric



Flame Retardant



Waterproof



ShieldPlus™



Stain Resist



Breathable



MED Approved



Environmentally

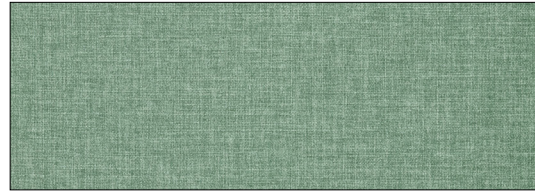


REACH Compliant

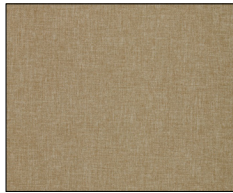
Latest update 202603v1



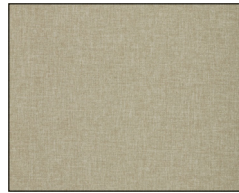
Highland 858 Cobble **(New)** LRV 18.6



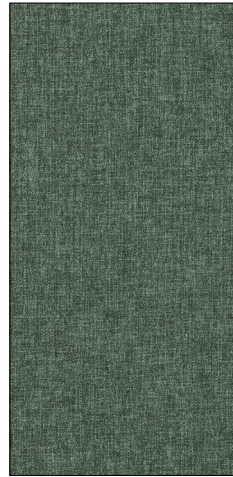
Highland 271 Celadon **(New)** LRV 26.7



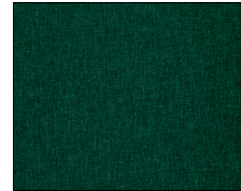
Highland 823 Chablis LRV 27.9



Highland 835 Hessian LRV 32.2



Highland 221 Dusty Sage **(New)** LRV 13.5



Highland 203 Emerald LRV 4.2



Highland 877 Oyster **(New)** LRV 32.5



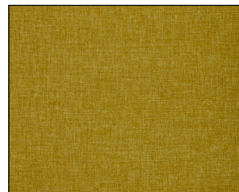
Highland 208 Fern Green LRV 23.3



Highland 231 Olive LRV 9.9



Highland 207 Evergreen **(New)** LRV 4.8



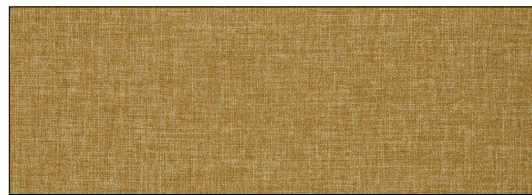
Highland 300 Gold LRV 24.7



Highland 211 Spruce **(New)** LRV 6.7



Highland 321 Wheat LRV 25.7

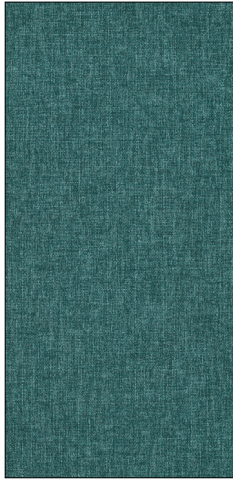


Highland 314 Mustard **(New)** LRV 22.1

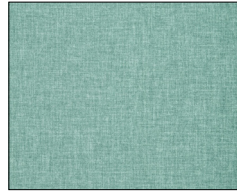


Highland 229 Forest LRV 5.6

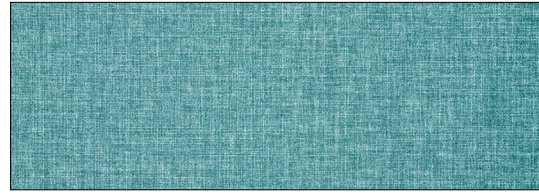
The colours of all pictures are only an indication and may therefore differ from reality. Consequently, no rights may be derived from the colours displayed.



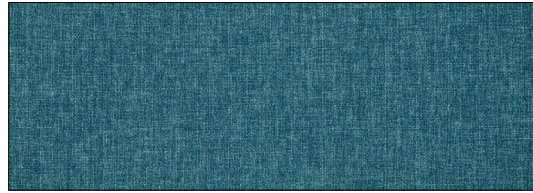
Highland 129 Ocean LRV 9.3



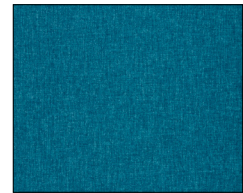
Highland 134 Sky LRV 31.1



Highland 131 Azure LRV 21.1



Highland 110 Pacific (New) LRV 9.1



Highland 151 Teal LRV 8.1



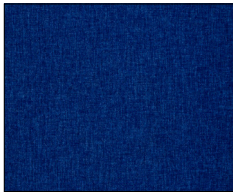
Highland 116 Navy LRV 2.6



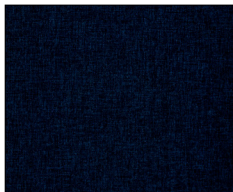
Highland 192 Ink (New) LRV 3.4



Highland 107 Cornflower (New) LRV 14.1



Highland 117 Royal LRV 3.6



Highland 105 Indigo LRV 1.9



Highland 196 Heritage Blue (New) LRV 16.2



Highland 903 Charcoal LRV 1.1



Highland 911 Steel LRV 13.5



Highland 901 Silver LRV 27.8



Highland 954 Graphite LRV 5.7

The colours of all pictures are only an indication and may therefore differ from reality. Consequently, no rights may be derived from the colours displayed.

HIGHLAND

FABRICS B2B



Highland
436 Paprika **(New)**

LRV 10.7



Highland
841 Biscotti

LRV 14.2



Highland
807 Mushroom

LRV 22.0



Highland
703 Mink

LRV 10.0



Highland
408 Terracotta

LRV 7.1



Highland
619 Rosewood **(New)**

LRV 9.8



Highland
905 Dove

LRV 13.5



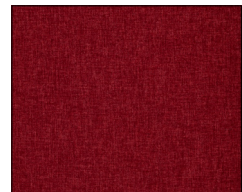
Highland
906 Ash **(New)**

LRV 15.1



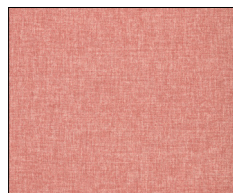
Highland
692 Heather **(New)**

LRV 16.8



Highland
405 Crimson

LRV 6.9



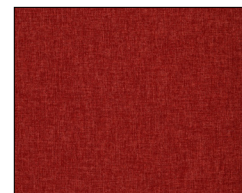
Highland
618 Blush

LRV 29.0



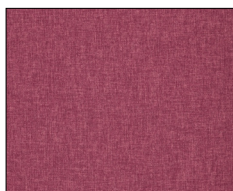
Highland
481 Damson **(New)**

LRV 2.3



Highland
400 Red

LRV 9.8



Highland
646 Peony

LRV 15.2



Highland
648 Fig

LRV 6.5

The colours of all pictures are only an indication and may therefore differ from reality. Consequently, no rights may be derived from the colours displayed.



Highland

Composition

100% Polyester with Microporous Film & FR Backcoating

Width

Approx 136cm (53.5")

Weight

320g/m² (± 5%)

End Use

Upholstery

Flammability Ratings

BS 7176: Medium Hazard
BS 5852: 2006 Ignition Source 5
BS EN 1021-1/2

1IM UNI 9175 (Italy)
B1 (Germany)

NFPA 260 (USA)
CAL TB 117 (USA)

IMO FTP Code 2010 Part 8
IMO FTP Code 2010 Part 5

Product Performance

Colour Fastness to Light

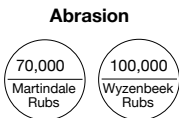
Grade 6+

Colour Fastness to Rubbing

Wet >4 Dry >4

Hydrostatic Head

3m



Technical Features

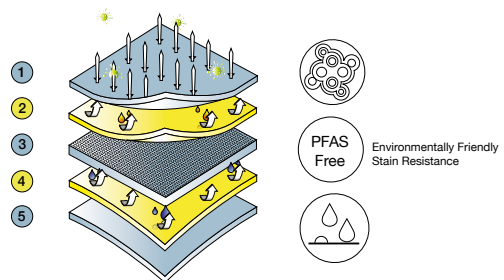
Flame Retardant, Stain Resist, ShieldPlus™ Antimicrobial, Waterproof, Breathable

Environmental and Compliance

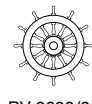
PFAS Free, REACH Compliant

Care Instructions

- Vacuum and wipe clean routinely with a microfibre cloth lightly dampened with cold water only.
- Soak up spillages as soon as possible with an absorbent dry cloth to prevent staining.
- Remove body fluids and extreme soiling immediately (within 15 minutes) with cold water then apply approved infection control protocol: Haz Tabs, Chlor Clean or ShieldPlus™ etc. As the concentration of bleach can vary greatly among proprietary brands we recommend these be avoided but in extreme circumstances a 5% solution may be used. Remove product residues and then dry with clean absorbent cloth.
- Do not fully immerse in water.
- Do not tumble dry.
- Do not dry clean.
- Do not steam clean - heat seals in stains.
- Do not apply solvents, alcohol or any other chemical cleaners.



- 1 Anti-Microbial ShieldPlus™ Protection permanently inhibits the broadest spectrum of microbes (even C diff spore) and prevents nasty odours.
- 2 Stain Resist - PFAS free technology combining effectiveness with environmental consideration.
- 3 Fabric - Comfortable but durable to suit the most extreme environments.
- 4 Waterproof film - Hydrostatic head test exceeds standard requirement of 1 metre.
- 5 Flame Retardant - Passes UK and most international contract FR standards.



Panaz®

Head Office: Panaz Ltd, Bentley Wood Way, Hapton, Burnley, Lancashire, BB11 5ST, England. Tel: +44 (0)1282 696969 email: sales@panaz.co.uk www.panaz.com
Clerkenwell Showroom, 66 Clerkenwell Rd, London, EC1M 5PX, England. Tel: +44 (0)20 8875 1444 email: clerkenwellshowroom@panaz.co.uk
Panaz USA Inc., 230 South New York Avenue, Suite 101, Winter Park, FL 32714, USA. Tel: +1 919 747 8211 email: sales@panaz.com www.panaz.us

Continuity Although every effort is made to ensure that fabrics ordered match the colours in this pattern card, slight variations may occur from batch to batch.

© Panaz own the copyright of all designs shown in this pattern card, any infringement of which will be actioned by law.

Please note Panaz reserve the right to update product specification at their discretion.

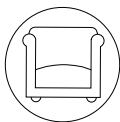
PZ:12/25

Pamaz[®]

Luxe

A performance velvet in 50 inspiring colours

Upholstery
FR Contract Fabric



Flame Retardant



Waterproof



Stain Resistant



ShieldPlus
Antimicrobial

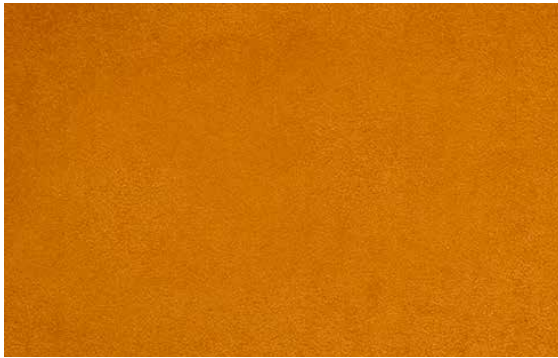


Breathable

The colours of all pictures are only an indication and may therefore differ from reality. Consequently, no rights may be derived from the colours displayed.

LUXE PERFORMANCE VELVET

FABRICS B2B



Luxe 824 Ochre (New) LRV 19.1



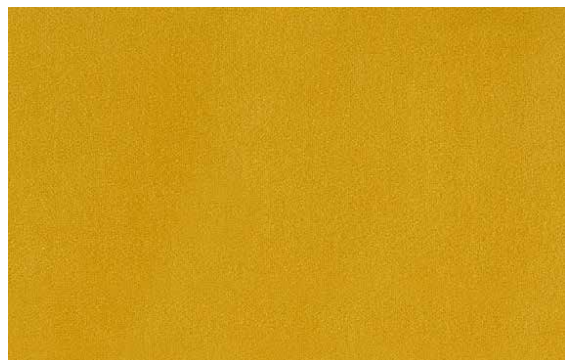
Luxe 447 Cinnamon LRV 13.9



Luxe 300 Gold (New) LRV 15.8



Luxe 823 Chablis (New) LRV 33.33



Luxe 238 Citrus LRV 30.0



Luxe 805 Cream (New) LRV 58.7



Luxe 837 Stone LRV 44.5



Luxe 806 Camel (New) LRV 11.6



Luxe 905 Dove LRV 26.1



Luxe 703 Mink (New) LRV 13.5



Luxe 904 Pewter (New) LRV 5.0

The colours of all pictures are only an indication and may therefore differ from reality. Consequently, no rights may be derived from the colours displayed.

LUXE PERFORMANCE VELVET

FABRICS B2B



Luxe 226 Lime **(New)** LRV 17.1



Luxe 252 Willow LRV 14.7



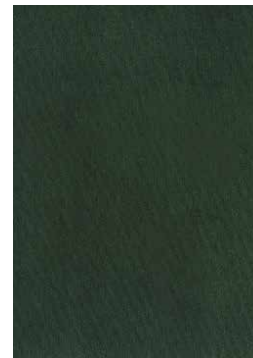
Luxe 203 Emerald **(New)** LRV 2.4



Luxe 242 Laurel **(New)** LRV 9.2



Luxe 229 Forest **(New)** LRV 7.0



Luxe 211 Spruce LRV 3.7



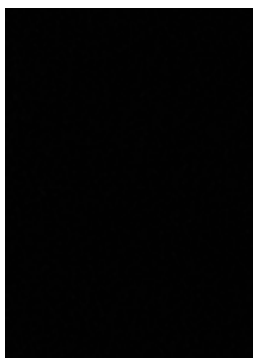
Luxe 209 Wasabi LRV 31.8



Luxe 231 Olive **(New)** LRV 6.2



Luxe 228 Bottle Green **(New)** LRV 1.3



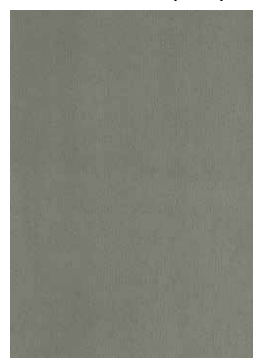
Luxe Velvet 900 Black LRV 0.4



Luxe 954 Graphite LRV 6.9



Luxe 906 Ash **(New)** LRV 13.5



Luxe 919 Zinc LRV 28.8

The colours of all pictures are only an indication and may therefore differ from reality. Consequently, no rights may be derived from the colours displayed.

LUXE PERFORMANCE VELVET

FABRICS B2B



Luxe 104 Cobalt **(New)** LRV 15.1



Luxe 192 Ink LRV 8.3



Luxe 117 Royal **(New)** LRV 0.3



Luxe 108 Delph LRV 19.8



Luxe 134 Sky **(New)** LRV 13.4



Luxe 105 Indigo LRV 3.0



Luxe 271 Celadon LRV 41.1



Luxe 215 Elm LRV 14.7



Luxe 129 Ocean **(New)** LRV 11.8



Luxe 151 Teal LRV 9.0



Luxe 219 Seafoam **(New)** LRV 36.2



Luxe 131 Azure **(New)** LRV 21.4



Luxe 111 Peacock **(New)** LRV 3.4

The colours of all pictures are only an indication and may therefore differ from reality. Consequently, no rights may be derived from the colours displayed.

LUXE PERFORMANCE VELVET

FABRICS B2B



Luxe 412 Purple **(New)** LRV 2.6



Luxe 642 Thistle LRV 15.1



Luxe 609 Rose **(New)** LRV 21.8



Luxe 481 Damson **(New)** LRV 0.7



Luxe 648 Fig LRV 2.6



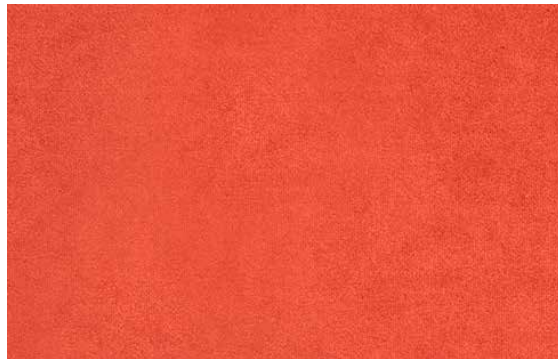
Luxe 646 Peony **(New)** LRV 8.73



Luxe 618 Blush LRV 27.7



Luxe 467 Bordeaux LRV 2.2



Luxe 574 Dark Coral **(New)** LRV 12.0



Luxe 637 Soft Peach **(New)** LRV 29.3



Luxe 424 Vermillion **(New)** LRV 6.6



Luxe 437 Tuscan Red **(New)** LRV 4.3



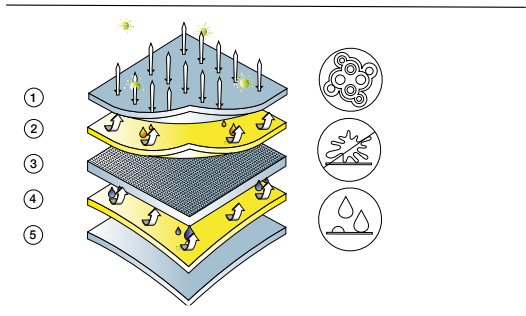
Luxe 408 Terracotta LRV 13.4

The colours of all pictures are only an indication and may therefore differ from reality. Consequently, no rights may be derived from the colours displayed.



Luxe Performance Velvet

Composition 100% Polyester with Microporous Film and FR Laminate	
Width Approx 140cm (55")	
Weight 450g/m ² (± 5%)	
End Use Upholstery	
Flammability Ratings BS 7176: Medium Hazard BS 5852: 2006 Ignition Source 5 EN1021-1/2 NFPA 260 USA CAL TB 117 IMO: FTP CODE 2010 Part 8	
Product Performance	Abrasion
Colour Fastness to Light Grade 4-5 +	70,000 Martindale Rubs
Colour Fastness to Rubbing Wet>4 Dry>4	50,000 Wyzenbeek Rubs
Waterproof Hydrostatic head >5m	
Technical Features Flame Retardant, Waterproof, Stain Resistant, SheildPlus™ Antimicrobial Protection	
Care Instructions	
<ul style="list-style-type: none"> • Vacuum and wipe clean routinely with a microfibre cloth lightly dampened with cold water only. • Soak up spillages as soon as possible with an absorbent dry cloth to prevent staining. • Remove body fluids and extreme soiling immediately (within 15 minutes) with cold water then apply approved infection control protocol: Haz Tabs, Chlor Clean or SheildPlus™ etc. As the concentration of bleach can vary greatly among proprietary brands we recommend these be avoided but in extreme circumstances 5% solution may be used. Remove product residues and then dry with a clean absorbent cloth. • Do not steam clean - heat seals in stains. • Do not tumble dry. • Do not dry clean. • Do not fully immerse in water. • Do not apply solvents, alcohol or any other chemical cleaners. 	



- 1 Antimicrobial SheildPlus™ Protection permanently inhibits the broadest spectrum of microbes (even C diff spore) and prevents nasty odours.
- 2 Stain Resistant - A C6 fluorocarbon technology combining effectiveness with environmental consideration.
- 3 Fabric - Comfortable but durable to suit the most extreme environments.
- 4 Waterproof film - Hydrostatic head test exceeds requirement of 1m.
- 5 Flame Retardant - Passes UK and most international contract FR standards.



Head Office: Panaz Ltd, Bentley Wood Way, Hapton, Burnley, Lancashire, BB11 5ST, England. Tel: +44 (0)1282 696969 email: sales@panaz.co.uk www.panaz.co.uk
 Panaz USA Inc., 230 South New York Avenue, Suite 101, Winter Park, FL 32789, USA. Tel: +1 919 747 8211 email: sales@panaz.com www.panaz.com
 Panaz Europe Ltd, V. Malitah, Mediterranean Street, The Village, St. Julians, STJ 1870, Malta. Tel: 00356-27780052 email: admin@panaz.com

Continuity Although every effort is made to ensure that fabrics ordered match the colours in this pattern card, slight variations may occur from batch to batch.
 © Panaz own the copyright of all designs shown in this pattern card, any infringement of which will be actioned by law.
 Please note Panaz reserve the right to update product specification at their discretion.

Printed on Revive 100% recycled board

PZ:11/22

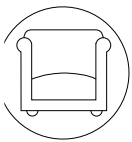
The colours of all pictures are only an indication and may therefore differ from reality. Consequently, no rights may be derived from the colours displayed.

Pamaz[®]

Riva

A blend of soft tones and textures create an inviting woven fabric.

Upholstery
FR Contract Fabric



Fire Retardant



Waterproof



Stain Resistant



ShieldPlus[™]
Antimicrobial

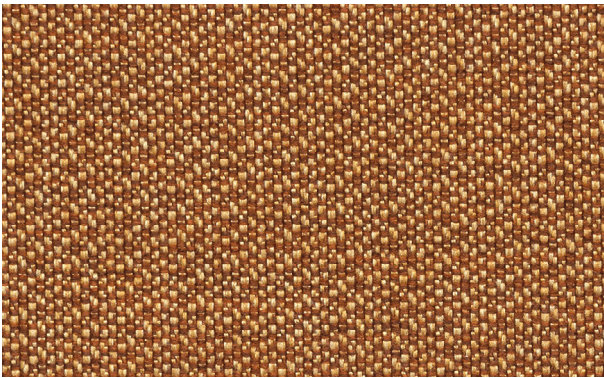


REACH Compliant



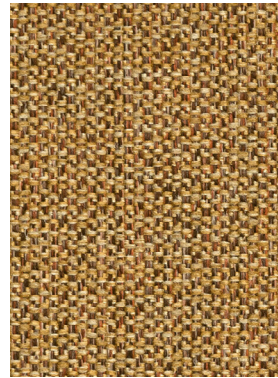
Halogen
Free

The colours of all pictures are only an indication and may therefore differ from reality. Consequently, no rights may be derived from the colours displayed.



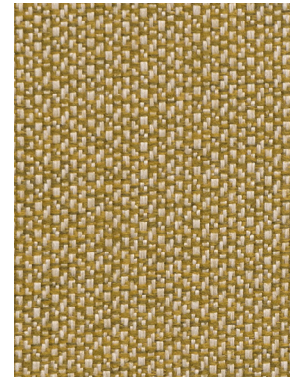
Riva
824 Ochre

LRV 17.17



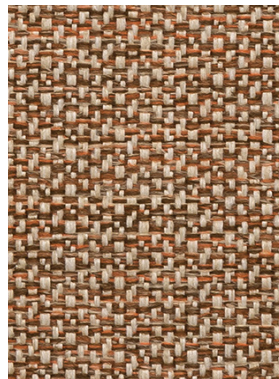
Riva
300 Gold

LRV 25.69



Riva
238 Citrus

LRV 29.47



Riva
770 Nutmeg

LRV 21.36



Riva
823 Chablis

LRV 28.37



Riva
837 Stone

LRV 39.54



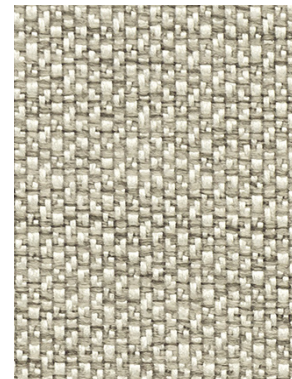
Riva
703 Mink

LRV 13.77



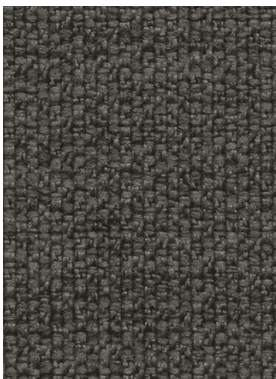
Riva
905 Dove

LRV 31.63



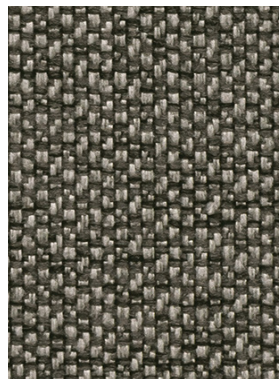
Riva
919 Zinc

LRV 37.91



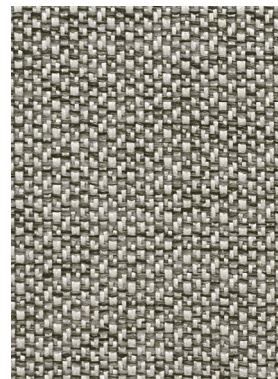
Riva
903 Charcoal

LRV 5.18



Riva
904 Pewter

LRV 13.53



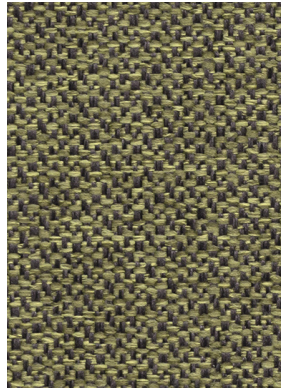
Riva
971 Nickel

LRV 25.96

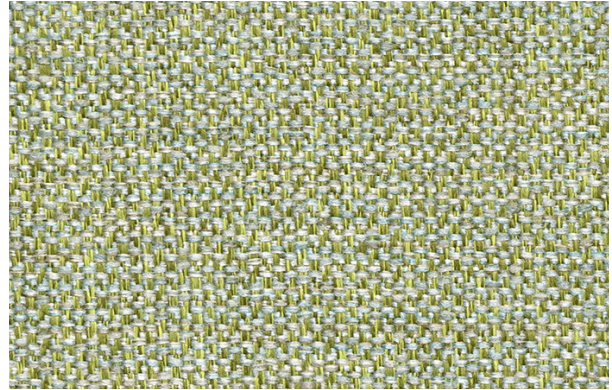
The colours of all pictures are only an indication and may therefore differ from reality. Consequently, no rights may be derived from the colours displayed.



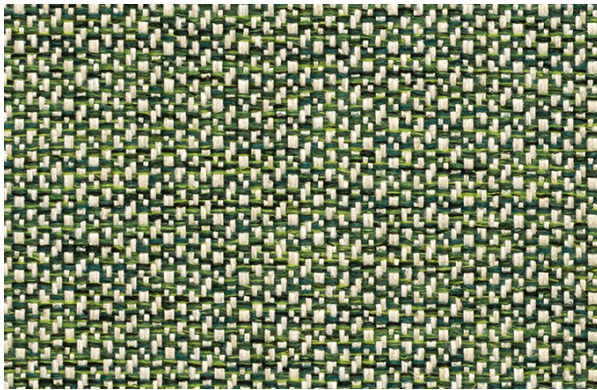
Riva 209 Wasabi LRV 37.11



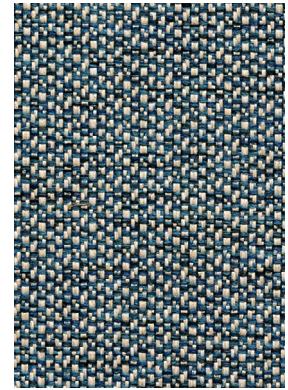
Riva 252 Willow LRV 18.25



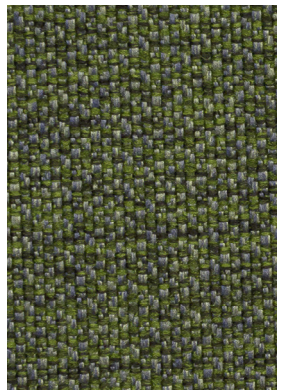
Riva 271 Celadon LRV 33.69



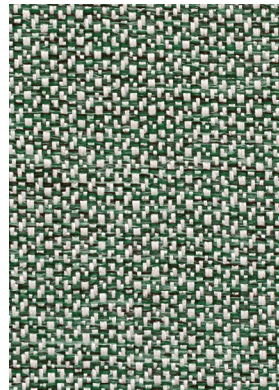
Riva 211 Spruce LRV 19.7



Riva 108 Delph LRV 22.51



Riva 231 Olive LRV 5.96



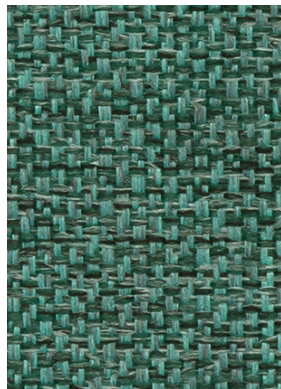
Riva 258 Juniper LRV 22.99



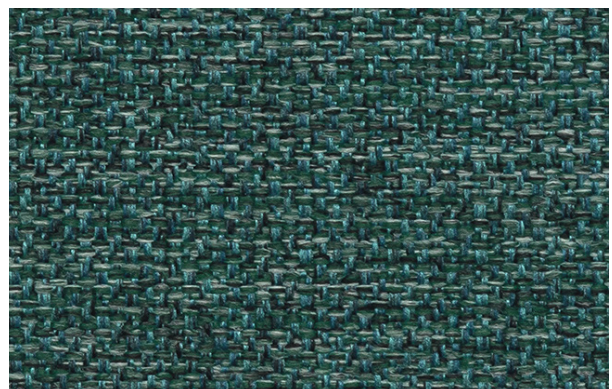
Riva 207 Evergreen LRV 6.91



Riva 219 Seafoam LRV 43.10

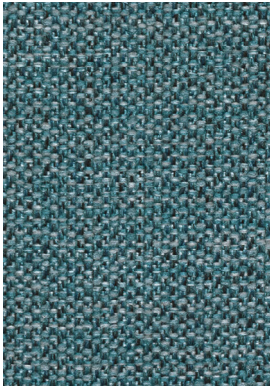


Riva 129 Ocean LRV 12.85

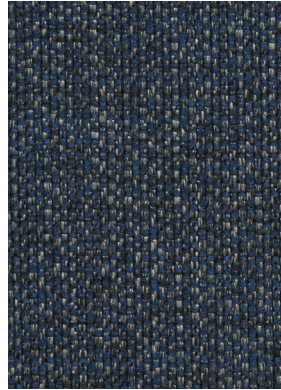


Riva 111 Peacock LRV 7.59

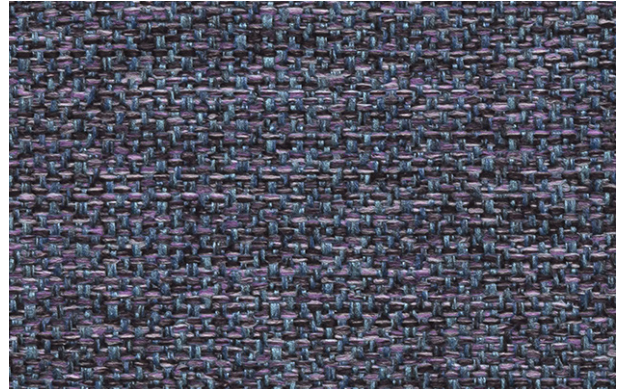
The colours of all pictures are only an indication and may therefore differ from reality. Consequently, no rights may be derived from the colours displayed.



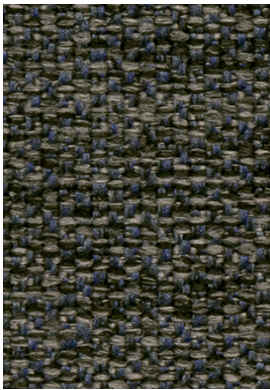
Riva 134 Sky LRV 13.67



Riva 117 Royal LRV 4.31



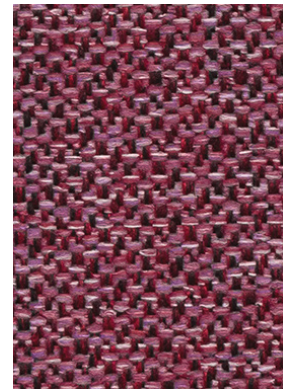
Riva 412 Purple LRV 7.94



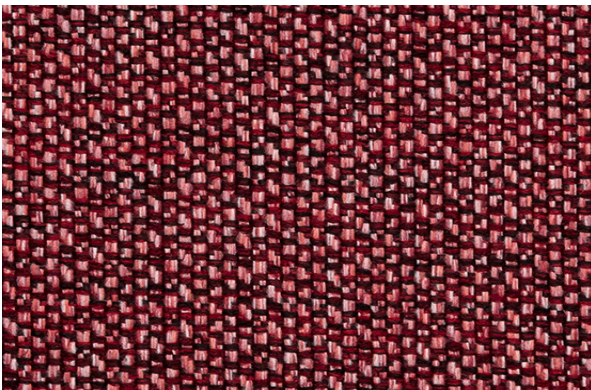
Riva 954 Graphite LRV 6.85



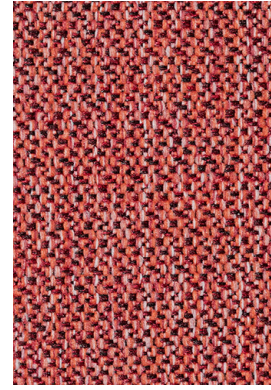
Riva 642 Thistle LRV 13.19



Riva 646 Peony LRV 13.69



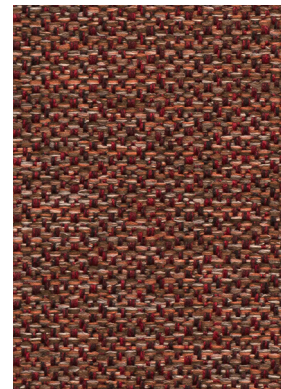
Riva 467 Bordeaux LRV 11.33



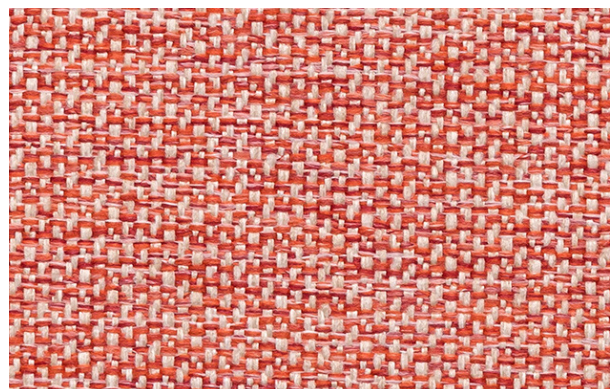
Riva 574 Dark Coral LRV 15.45



Riva 618 Blush LRV 36.50



Riva 437 Tuscan Red LRV 8.75



Riva 637 Soft Peach LRV 30.69

The colours of all pictures are only an indication and may therefore differ from reality. Consequently, no rights may be derived from the colours displayed.



Riva

Composition 100% Polyester with Microporous Film and FR Laminate
Width Approx 140cm (55")
Weight 400g/m ² (± 5%)
End Use Upholstery
Flammability Ratings BS 7176: Medium Hazard BS 5852: 2006 Ignition Source 5 BS EN 1021-1/2 11M UNI 9175 (Italy) NFPA 260 (USA) CAL 117 (USA) IMO FTP Code 2010 Part 8

Product Performance	Abrasion
Colour Fastness to Light Grade 6+	60,000 Martindale Rubs
Hydrostatic Head 3m+	50,000 Wyzenbeek Rubs

Technical Features
Flame Retardant, Stain Resistant. Waterproof, ShieldPlus™ Antimicrobial.

Environmental and Compliance
Halogen Free, Red List Compliant, Proposition 65 Compliant, REACH Compliant

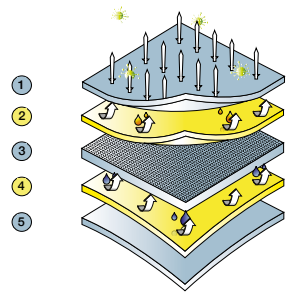


Care Instructions

- Vacuum and wipe clean routinely with a microfibre cloth lightly dampened with cold water only.
- Soak up spillages as soon as possible with an absorbent dry cloth to prevent staining.
- Remove body fluids and extreme soiling immediately (within 15 minutes) with cold water then apply approved infection control protocol: Haz Tabs, Chlor Clean, Anti-Chlor, Clinnel Universal Wipes and Panaz Shield Plus™.

As the concentration of bleach can vary greatly among proprietary brands we recommend these be avoided but in extreme circumstances a 5% solution may be used. Remove product residues and then dry with clean absorbent cloth.

- Do not fully immerse in water.
- Do not tumble dry.
- Do not steam clean - heat seals in stains.
- Do not dry clean.
- Do not apply solvents, alcohol or any other chemical cleaners.



- 1 Antimicrobial ShieldPlus™ Protection permanently inhibits the broadest spectrum of microbes (even C diff spore) and prevents nasty odours.
- 2 Stain Resistant - A fluorocarbon technology combining effectiveness with environmental consideration.
- 3 Fabric - Comfortable but durable to suit the most extreme environments.
- 4 Waterproof film - Hydrostatic head test exceeds British Standard requirement of 1m.
- 5 Flame Retardant - Passes UK and most international contract FR standards.



Head Office: Panaz Ltd, Bentley Wood Way, Hapton, Burnley, Lancashire, BB11 5ST, England. Tel: +44 (0)1282 696969 email: sales@panaz.co.uk www.panaz.com
 Clerkenwell Showroom, 66 Clerkenwell Rd, London EC1M 5PX, England. Tel: +44 (0)20 8875 1444 email: clerkenwellshowroom@panaz.co.uk
 Panaz USA Inc., 230 South New York Avenue, Suite 101, Winter Park, FL 32714, USA. Tel: +1 919 747 8211 email: sales@panaz.com www.panaz.us

Continuity Although every effort is made to ensure that fabrics ordered match the colours in this pattern card, slight variations may occur from batch to batch.
 © Panaz own the copyright of all designs shown in this pattern card, any infringement of which will be actioned by law.
 Please note Panaz reserve the right to update product specification at their discretion.

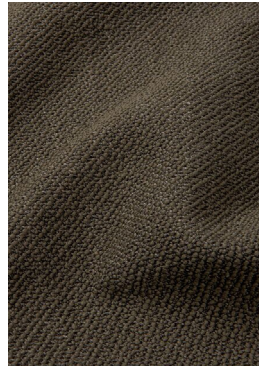
The colours of all pictures are only an indication and may therefore differ from reality. Consequently, no rights may be derived from the colours displayed.



Fabrics B2C



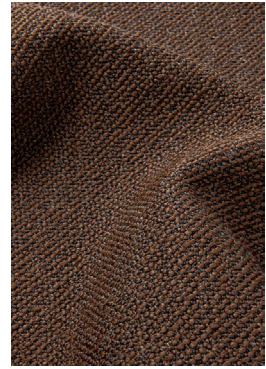
100



500



101



102



600



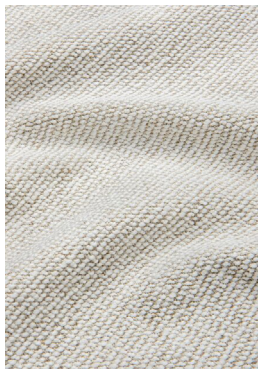
800



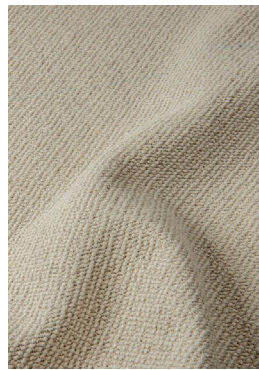
802



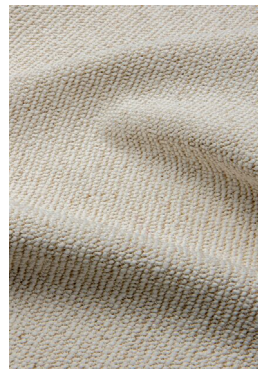
803



900



901



903



902

The colours of all pictures are only an indication and may therefore differ from reality. Consequently, no rights may be derived from the colours displayed.

301005

MODENA

GENERAL INFORMATION

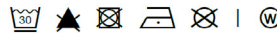
Composition	97% PES 3% LI
Weight	675 g/m ² 979 g/lm 1.24 lb/yd ² 1.97 lb/yd
Width	145 cm 57"
Min. usable width	138 cm 54"
Average roll length	20 m 22 yd
Tariff code*	EU: 54079300 USA: 5407694060

*Opinion only. No binding rule assigned.

PRODUCT USAGE



CLEANING INSTRUCTIONS



Shrinkage 30° C	WARP	WEFT
	-1,60%	-1,70%
Maximum shrinkage: 3%		

PHYSICAL TESTING

Martindale abrasion EN ISO 12947-2: 1998 Minimum grade: 20000 rubs	end point 100000 rubs
---	---------------------------------

Wyzenbeek ASTM D4157-13 Minimum grade: 15000 rubs	end point 100000 rubs
--	---------------------------------

Pilling on Martindale EN ISO 12945-2: 2000 Minimum grade: 3/4(at 2000 rubs)	500 rubs 4	1000 rubs 4	2000 rubs 4	5000 rubs 4
--	----------------------	-----------------------	-----------------------	-----------------------

Resistance to pilling, brush method ASTM D3511 Minimum grade: 3	Grade 3.5
--	---------------------

Seam slippage* EN ISO 13936-2 Minimum grade: 6 mm	Warp 3,00 mm	Weft 3,00 mm
--	------------------------	------------------------

Yarn slippage* ASTM S4034-19 Minimum grade: 25 lbf	Warp 69,60 lbf	Weft 32,10 lbf
---	--------------------------	--------------------------

Tear strength EN ISO 13937-3: 2000 Minimum grade: 20 N	Warp 470,00 N	Weft 610,00 N
---	-------------------------	-------------------------

Tear strength ASTM S2261-13 Minimum grade: 6 lbf	Warp 129.0 lbf	Weft 85.1 lbf
---	--------------------------	-------------------------

Tensile strength EN ISO 13934-1 Minimum grade: 350 N	Warp 3200,00 N	Weft 3500,00 N
---	--------------------------	--------------------------

Breaking strength ASTM D5034-21 (Grab) Minimum grade: 50 lbf	Warp 502,40 lbf	Weft 624,50 lbf
---	---------------------------	---------------------------

The colours of all pictures are only an indication and may therefore differ from reality. Consequently, no rights may be derived from the colours displayed.

STANDARD INHERENT FLAME RETARDANT

Cigarette test	EN 1020/1	Pass
	BS 5852/0	Pass
California technical	CAL 117/2013	Pass

CERTIFICATIONS



OEKO-TEX® Standard 100	Certified - Product Class II
-------------------------------	------------------------------

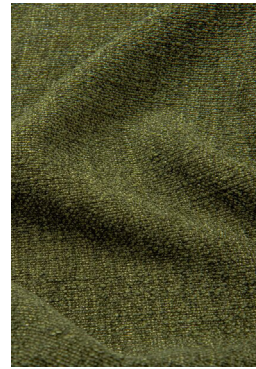
The colours of all pictures are only an indication and may therefore differ from reality. Consequently, no rights may be derived from the colours displayed.



503



502



501



500



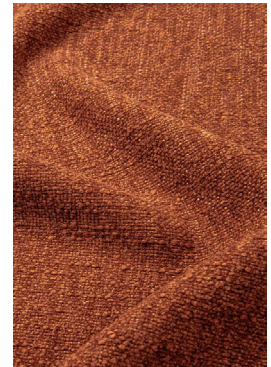
200



300



301



302



102



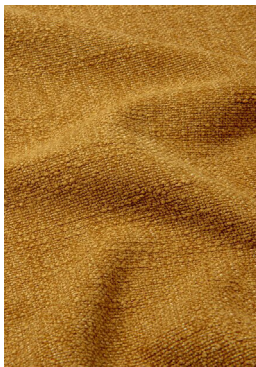
100



101



103



401



400

The colours of all pictures are only an indication and may therefore differ from reality. Consequently, no rights may be derived from the colours displayed.



900



901



902



903



904



905



906



701



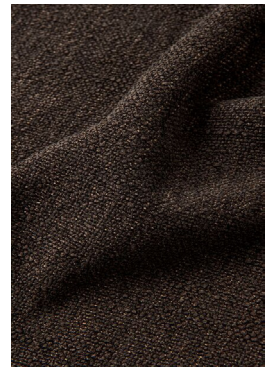
801



802



803



804



601



602



600

The colours of all pictures are only an indication and may therefore differ from reality. Consequently, no rights may be derived from the colours displayed.

301003

RHINE

GENERAL INFORMATION

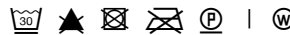
Composition 100% PES
Weight 540 g/m² | 772 g/lm
 1.00 lb/yd² | 1.56 lb/yd
Width 143 cm | 56"
Min. usable width 138 cm | 54"
Average roll length 25 m | 27 yd
Tariff code* EU: 58013600 | USA: 5801360010

*Opinion only. No binding rule assigned.

PRODUCT USAGE



CLEANING INSTRUCTIONS



Shrinkage 30° C **WARP** **WEFT**
 -0,80% -0,90%

Maximum shrinkage: 3%

PHYSICAL TESTING

Martindale abrasion **end point**
 EN ISO 12947-2: 1998 100000 rubs
 Minimum grade: 20000 rubs

Wyzenbeek **end point**
 ASTM D4157-13 100000 rubs
 Minimum grade: 15000 rubs

Pilling on Martindale	500 rubs	1000 rubs	2000 rubs	5000 rubs
EN ISO 12945-2: 2000	4-5	4	4	4
Minimum grade: 3/4(at 2000 rubs)				

Resistance to pilling, brush method **Grade**
 ASTM D3511 3.5
 Minimum grade: 3

Seam slippage*	Warp	Weft
EN ISO 13936-2	3,00 mm	3,00 mm
Minimum grade: 6 mm		

Yarn slippage*	Warp	Weft
ASTM S4034-19	140,60 lbf	110,70 lbf
Minimum grade: 25 lbf		

Tear strength	Warp	Weft
EN ISO 13937-3: 2000	180,00 N	160,00 N
Minimum grade: 20 N		

Tear strength	Warp	Weft
ASTM S2261-13	56.8 lbf	36.8 lbf
Minimum grade: 6 lbf		

Tensile strength	Warp	Weft
EN ISO 13934-1	2500,00 N	990,00 N
Minimum grade: 350 N		

Breaking strength	Warp	Weft
ASTM D5034-21 (Grab)	428,40 lbf	199,20 lbf
Minimum grade: 50 lbf		

The colours of all pictures are only an indication and may therefore differ from reality. Consequently, no rights may be derived from the colours displayed.

STANDARD INHERENT FLAME RETARDANT

Cigarette test	EN 1020/1	Pass
	BS 5852/0	Pass
California technical	CAL 117/2013	Pass

CERTIFICATIONS



OEKO-TEX® Standard 100	Certified - Product Class II
------------------------	------------------------------

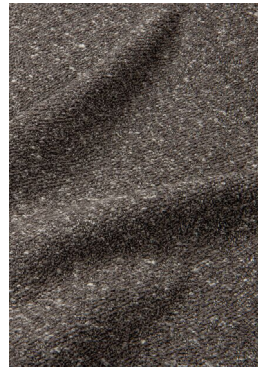
The colours of all pictures are only an indication and may therefore differ from reality. Consequently, no rights may be derived from the colours displayed.



600



601



803



804



502



500



501



800



100



101



102



200



300



400

The colours of all pictures are only an indication and may therefore differ from reality. Consequently, no rights may be derived from the colours displayed.



903



902



904



905



900



901



801



802

The colours of all pictures are only an indication and may therefore differ from reality. Consequently, no rights may be derived from the colours displayed.

301009

RHO

GENERAL INFORMATION

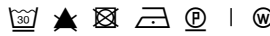
Composition 96% PES 2% AC 2% WO
Weight 620 g/m² | 899 g/lm
 1.14 lb/yd² | 1.81 lb/yd
Width 145 cm | 57"
Min. usable width 138 cm | 54"
Average roll length 25 m | 27 yd
Tariff code* EU: 54079300 | USA: 5407694060

*Opinion only. No binding rule assigned.

PRODUCT USAGE



CLEANING INSTRUCTIONS



Shrinkage 30° C **WARP** **WEFT**
 -0,80% -0,60%

Maximum shrinkage: 3%

PHYSICAL TESTING

Martindale abrasion **end point**
 EN ISO 12947-2: 1998 100000 rubs
 Minimum grade: 20000 rubs

Wyzenbeek **end point**
 ASTM D4157-13 100000 rubs
 Minimum grade: 15000 rubs

Pilling on Martindale **500 rubs** **1000 rubs** **2000 rubs** **5000 rubs**
 EN ISO 12945-2: 2000 4-5 4-5 4 4
 Minimum grade: 3/4 (at 2000 rubs)

Resistance to pilling, brush method **Grade**
 ASTM D3511 3
 Minimum grade: 3

Seam slippage* **Warp** **Weft**
 EN ISO 13936-2 4,00 mm 6,00 mm
 Minimum grade: 6 mm

Yarn slippage* **Warp** **Weft**
 ASTM S4034-19 36,90 lbf 35,90 lbf
 Minimum grade: 25 lbf

Tear strength **Warp** **Weft**
 EN ISO 13937-3: 2000 260,00 N 590,00 N
 Minimum grade: 20 N

Tear strength **Warp** **Weft**
 ASTM S2261-13 59.3 lbf 109.0 lbf
 Minimum grade: 6 lbf

Tensile strength **Warp** **Weft**
 EN ISO 13934-1 1600,00 N 1600,00 N
 Minimum grade: 350 N

Breaking strength **Warp** **Weft**
 ASTM D5034-21 (Grab) 264,50 lbf 146,30 lbf
 Minimum grade: 50 lbf

The colours of all pictures are only an indication and may therefore differ from reality. Consequently, no rights may be derived from the colours displayed.

STANDARD INHERENT FLAME RETARDANT

Cigarette test	EN 1020/1	Pass
	BS 5852/0	Pass
California technical	CAL 117/2013	Pass

CERTIFICATIONS



OEKO-TEX® Standard 100	Certified - Product Class II
------------------------	------------------------------

The colours of all pictures are only an indication and may therefore differ from reality. Consequently, no rights may be derived from the colours displayed.



101



102



103



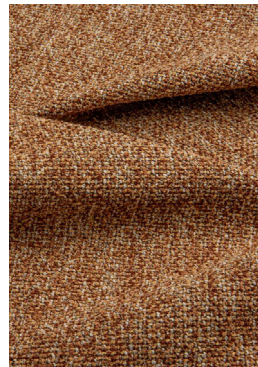
501



301



300



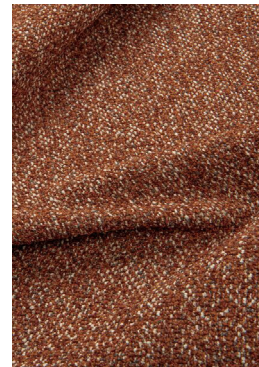
400



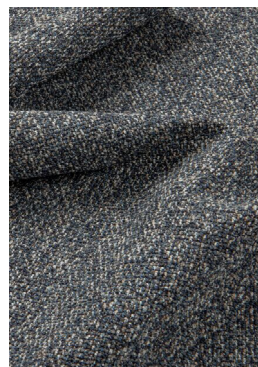
201



700



200



600



601



604



804



603



602

The colours of all pictures are only an indication and may therefore differ from reality. Consequently, no rights may be derived from the colours displayed.



805



500



502



900



801



802



605



904



901



902



903



803



905



906



907

The colours of all pictures are only an indication and may therefore differ from reality. Consequently, no rights may be derived from the colours displayed.

301012

TANA

GENERAL INFORMATION

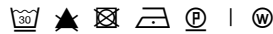
Composition 100% PES
Weight 520 g/m² | 754 g/lm
 0.96 lb/yd² | 1.52 lb/yd
Width 145 cm | 57"
Min. usable width 138 cm | 54"
Average roll length 30 m | 33 yd
Tariff code* EU: 54075300 | USA:

*Opinion only. No binding rule assigned.

PRODUCT USAGE



CLEANING INSTRUCTIONS



Shrinkage 30° C **WARP** **WEFT**
 -1,20% -1,00%

Maximum shrinkage: 3%

PHYSICAL TESTING

Martindale abrasion **end point**
 EN ISO 12947-2: 1998 100000 rubs
 Minimum grade: 20000 rubs

Wyzenbeek **end point**
 ASTM D4157-13 100000 rubs
 Minimum grade: 15000 rubs

Pilling on Martindale **500 rubs** **1000 rubs** **2000 rubs** **5000 rubs**
 EN ISO 12945-2: 2000 4-5 4 4 4
 Minimum grade: 3/4 at 2000rubs

Resistance to pilling, brush method **Grade**
 ASTM D3511 3.5
 Minimum grade: 3

Seam slippage* **Warp** **Weft**
 EN ISO 13936-2 5,00 mm 3,00 mm
 Minimum grade: 6 mm

Yarn slippage* **Warp** **Weft**
 ASTM S4034-19 120,40 lbf 72,60 lbf
 Minimum grade: 25 lbf

Tear strength **Warp** **Weft**
 EN ISO 13937-3: 2000 420,00 N 400,00 N
 Minimum grade: 20 N

Tear strength **Warp** **Weft**
 ASTM S2261-13 102.2 lbf 75.5 lbf
 Minimum grade: 6 lbf

Tensile strength **Warp** **Weft**
 EN ISO 13934-1 1300,00 N 1300,00 N
 Minimum grade: 350 N

Breaking strength **Warp** **Weft**
 ASTM D5034-21 (Grab) 241,30 lbf 248,70 lbf
 Minimum grade: 50 lbf

The colours of all pictures are only an indication and may therefore differ from reality. Consequently, no rights may be derived from the colours displayed.

STANDARD INHERENT FLAME RETARDANT

Cigarette test	EN 1020/1	Pass
	BS 5852/0	Pass
California technical	CAL 117/2013	Pass

CERTIFICATIONS



REACH	Compliant
OEKO-TEX® Standard 100	Certified - Product Class II

The colours of all pictures are only an indication and may therefore differ from reality. Consequently, no rights may be derived from the colours displayed.



Moments Furniture

Deefakkerstraat 2
8870 Ingelmunster
Belgium
T +32 51 489 258

W2 Moments

Edisonstraat 25
4004 JL Tiel
The Netherlands
T +31 344 619 844

FMB Care Nederland

Edisonstraat 25
4004 JL Tiel
The Netherlands
T +31 344 229 339

Moments Furniture France

130, Boulevard de la Liberté
59000 Lille
France
T +33 320 545 019

FMB Care

Am Shlinge 8
33154 Salzkotten
Germany
T +49 525 898 090 0

Moments Furniture Suisse

Chemin du croset 9
1024 Ecublens
Switzerland
T +41 21 697 05 05

momentsfurniture.com